

TABLE OF CONTENTS



UCLA won the MPSF Tournament in 2010, hosting the yearly conference tournament for the first time in program history.



Kelly Easterday (left) and Grace Reynolds enter the 2011 season as two of the conference's premier players. Reynolds led UCLA with 43 goals in 2010.

2011 WOMEN'S WATER POLO SCHEDULE

Day	Date	Opponent	Site	Time
Sat.	Jan. 22	Michigan Invitational	Ann Arbor, Mich.	All Day
Sun.	Jan. 23	Michigan Invitational	Ann Arbor, Mich.	All Day
Sat.	Jan. 29	Long Beach State	Spieker Aquatics Center	1 p.m.
Sat.	Feb. 5	Stanford Invitational	Stanford, Calif.	All Day
Sun.	Feb. 6	Stanford Invitational	Stanford, Calif.	All Day
Sat.	Feb. 12	Triton Invitational	La Jolla, Calif.	All Day
Sun.	Feb. 13	Triton Invitational	La Jolla, Calif.	All Day
Sat.	Feb. 19	UC Irvine	Spieker Aquatics Center	1 p.m.
Thu.	Feb. 24	Hawaii*	Spieker Aquatics Center	7 p.m.
Sat.	Feb. 26	UC Irvine Invitational	Irvine, Calif.	All Day
Sun.	Feb. 27	UC Irvine Invitational	Irvine, Calif.	All Day
Sat.	March 5	at Arizona State*	Tempe, Ariz.	11 a.m.
Sat.	March 5	vs. Cal Baptist	Tempe, Ariz.	1:30 p.m.
Sat.	March 12	California*	Spieker Aquatics Center	1 p.m.
Sat.	March 26	at Stanford*	Stanford, Calif.	4 p.m.
Sat.	April 2	at San Jose State*	San Jose, Calif.	12 p.m.
Sat.	April 9	USC*	Spieker Aquatics Center	1 p.m.
Thu.	April 14	Loyola Marymount	Spieker Aquatics Center	7 p.m.
Sat.	April 16	San Diego State*	Spieker Aquatics Center	1 p.m.
Fri-Sun.	April 29-May 1	MPSF Tournament	San Jose, Calif.	All Day
Sat.-Sun.	May 13-15	NCAA Tournament	Ann Arbor, Mich.	All Day

All game times are Pacific
*indicates MPSF game

- 1 Triton Invitational (hosted by UC San Diego)
- 2 MPSF Tournament (hosted by San Jose State)
- 3 NCAA Tournament (hosted by Michigan)



TABLE OF CONTENTS

THIS IS UCLA		2010 IN REVIEW	
Radio/TV Roster	3	Season in Review	22
Spieker Aquatics Center	4	Statistics and Results	23
2011 Roster	6	MPSF Standings and Honors	24
Season Outlook	7		
COACHING STAFF		UCLA HISTORY	
Head Coach Brandon Brooks	8	Game-by-Game Results	26
Assistant Coach Molly Cahill	9	Records	27
		All-Time Letterwinners, Awards	28
		Team USA and UCLA	29
		NCAA Championship History	30
THE BRUINS		GENERAL INFORMATION	
Barker, Bresee	10	Media Information	33
Burmeister	11	Athletic Administrators	34
Clark, Dement	12	The UCLA Experience	i
Dorst, Easterday	13		
Greenwood, Hafferkamp, Hill	14		
Kaczmarek, Kent, Krumpolz, Martin	15		
McGinley, Naranjo	16		
P. Orozco, S. Orozco	17		
Reynolds, Ronimus, Schulman	18		
Sebenaler, Simonds	19		
Todisco, Trella	20		
Umphrey	21		

Credits

The 2011 UCLA women's water polo media guide was written, edited and designed by Alex Timiraos, Sports Information Assistant. Photography by ASUCLA Campus Studio (Don Liebig), Allen Lorentzen, Jeff Sipsey and Brock Scott Photography. Special thanks to ASUCLA Photography, Berliner Studios, Andrew Bernstein, Ruth Chambers, the Los Angeles Visitors and Convention Bureau and Scott Guintard for their photos in the UCLA Experience.

QUICK FACTS

Location	J.D. Morgan Center	Coach's Phone	(310) 794-7412
	325 Westwood Plaza	2010 Record	22-8
	Los Angeles, CA 90095	2010 MPSF Record (Finish)	4-3 (t-3rd)
Athletics Phone	(310) 825-8699	2010 MPSF Tournament	1st
Chancellor	Gene Block	2010 NCAA Tournament	5th
Director of Athletics	Dan Guerrero	Letterwinners Returning/Lost	15/5
Senior Woman's Administrator	Petrina Long	National Championships	11 (7 NCAA)
Faculty Athletic Rep.	Donald Morrison	NCAA Tournament Appearances	15
Home Pool	Spieker Aquatics Center	Women's Water Polo SID	Alex Timiraos
Enrollment	39,900	Timiraos' Phone	(310) 206-0524
Founded	1919	Sports Information Fax	(310) 825-8664
Colors	Blue and Gold	Timiraos' E-mail	atimiraos@athletics.ucla.edu
Nickname	Bruins	Sports Information Director	Marc Dellins
Conference	Mountain Pacific Sports Federation	Web Site	www.uclabruins.com
Conference Water Polo Contact	Al Beard		
Conference Phone	(925) 296-0723		
Conference Fax	(925) 296-0724		
National Affiliation	NCAA Division I		
Head Coach	Brandon Brooks (UCLA '05)		
Record at UCLA	22-8 (1 year)		

RADIO/TV ROSTER



1 Caitlin Dement
Jr. - 6-0
Chino, CA (Ayala)



1 Sami Hill
Fr. - 5-11
Santa Barbara, CA (Dos Pueblos)



1 Kristen Simonds
Jr. - 6-2
San Jose, CA (Archbishop Mitty)



2 Emily Greenwood
So. - 6-0
Sanger, CA (Buchanan)



3 Megan Burmeister
Sr. - 5-8
Menlo Park, CA (Menlo)



4 Kelsey McGinley
Sr. - 5-7
Laguna Hills, CA (Laguna Hills)



5 Sarah Orozco
Jr. - 5-6
Commerce, CA (Montebello)



6 Priscilla Orozco
Sr. - 5-7
Commerce, CA (Montebello)



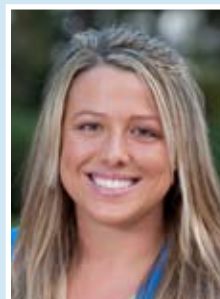
7 KK Clark
Jr. - 6-2
Atherton, CA (Sacred Heart Prep)



8 Brooke Martin
So. - 5-10
Temecula, CA (Chaparral)



9 Katie Estrada
Sr. - 5-8
Coronado, CA (Coronado)



10 Grace Reynolds
Sr. - 5-8
Santa Ana, CA (California)



11 Kelly Easterday
Sr. - 5-11
Santa Barbara, CA (Santa Barbara)



12 Hannah Sebenaler
Jr. - 5-7
Coronado, CA (Coronado)



13 Nicole Barker
RS So. - 5-10
Huntington Beach, CA (Huntington Beach)



14 Noel Umphrey
Sr. - 5-5
Santa Ana, CA (Foothill)



15 Randi Bresee
Jr. - 5-11
Rancho Cucamonga, CA (Los Osos)



16 Leslee Kaczmarek
So. - 5-11
Corona del Mar, CA (Corona del Mar)



17 Gisselle Naranjo
So. - 5-5
Commerce, CA (Whittier)



18 Leah Trella
So. - 5-10
Huntington Beach, CA (Huntington Beach)



19 Kelly Ronimus
Fr. - 5-10
Coronado, CA (Coronado)



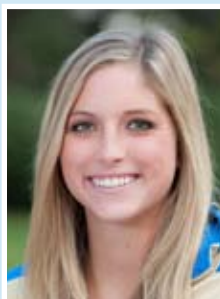
20 Kelsey Hafferkamp
Sr. - 5-11
Piedmont, CA (Piedmont)



21 Kari Krumpholz
So. - 5-10
Santa Ana, CA (Foothill)



22 Natasha Schulman
So. - 5-9
Laguna Beach, CA (Laguna Beach)



23 Victoria Kent
Fr. - 5-8
Newport Beach, CA (Corona del Mar)



24 Larissa Todisco
So. - 5-6
Lake Forest, CA (El Toro)



25 Becca Dorst
Fr. - 6-0
Menlo Park, CA (Menlo-Atherton)



Brandon Brooks
Head Coach - 2nd Season
Alma Mater - UCLA '05



Molly Cahill
Assistant Coach - 3rd Season
Alma Mater - UCLA '08



now in its second season as UCLA's home . . .

SPIEKER AQUATICS CENTER

The long-awaited new home to UCLA's aquatics program has become a reality. The Spieker Aquatics Center opened in September 2009, in time for the men's water polo season that fall. PCL Construction broke ground on the facility in July 2008.

In 2011, UCLA has seven matches on its schedule at Spieker Aquatics Center. Last season, the Bruins enjoyed playing four regular-season matches at their new home before hosting the MPSF Tournament the weekend of April 30-May 2. UCLA became the conference's first-ever No. 5-seed team to win the MPSF Tournament, earning victories over Hawai'i, Stanford and USC.

The athletics department opened its newest facility on Sept. 26, 2009, as the men's water polo team defeated UC Irvine, 10-4, after a dedication ceremony that evening. The women's water polo program earned a 9-5 victory over Cal State Northridge on Feb. 13, 2010, in its first-ever game at Spieker Aquatics Center.

Currently in its second full season as UCLA's home pool, Spieker Aquatics Center features a 52-meter by 25-yard all-deep water pool with a diving bulkhead, allowing races to take place at varying distances (meters, versus yards).

The pool also has four platforms on a diving tower, at heights of three, five seven and one half, and 10-meter platforms, as well as one and three-meter springboards. In addition, the aquatics center features a warming pool for divers directly behind the tower.

Adjacent to Sunset Canyon Recreation Center on the northwest portion of campus, the Spieker Aquatics Center was made possible thanks to a generous lead gift from former student-athlete Tod Spieker and his wife, Catherine. Tod, a 1971 UCLA graduate and All-American, swam for the Bruins from 1968-71 and still competes successfully in Master's Swimming.

The main pool, Dirks Pool, is named after Carolyn Dirks, who provided the lead gift for the swimming pool. Dirks Pool has also been used for special use events and Masters Swim meets. The signature feature of the Spieker Aquatics Center is the diving tower, which sits at the west end of the pool. The east end of the pool houses the new scoreboard, an LED, state-of-the-art piece of electronics, making scores, statistics and messages easily visible to all in attendance.

Next to the scoreboard is the "Wall of Champions", showcasing all of UCLA's water polo, swimming and

diving national championship teams, as well as all individual student-athletes' achievements, record-holders and Olympians.

Separate men's and women's locker rooms house enough lockers for all team members, with shower space and bathroom stalls and sinks for each team. Equipment needed for meets and matches have storage capacity on the facility's south side.

When walking through the public entryway to the center, visitors first notice the Donor Wall. All donors who generously made gifts to the Spieker Aquatics Center are recognized on this wall. Additionally, over 50 former UCLA water polo players, swimmers and divers made gifts to "name" a locker. Those names will forever be part of the locker rooms in the new facility.

The state-of-the-art facility brings together all three of UCLA's intercollegiate aquatic sports – water polo, swimming and diving – to one venue. The aquatics center features event lighting and permanent seating with the possibility of additional temporary seating for larger events.

SPIEKER AQUATICS CENTER



TIMELINE: CONSTRUCTION OF SPIEKER AQUATICS CENTER



July 2008



August 2008



November 2008



February 2009



August 2009



June 2009



April 2009



March 2009

2011 HOME SCHEDULE



LONG BEACH STATE

Saturday, Jan. 29
1 p.m.



UC IRVINE

Saturday, Feb. 19
1 p.m.



HAWAI'I

Thursday, Feb. 24
7 p.m.



CALIFORNIA

Saturday, March 12
1 p.m.



USC

Saturday, April 9
1 p.m.



LOYOLA MARYMOUNT

Thursday, April 14
7 p.m.



SAN DIEGO STATE

Saturday, April 16
1 p.m.

UCLA Encouraged by Team Depth, Experience in 2011

Led by eight seniors and six juniors, the Bruins enter their 2011 campaign eager to succeed

A motivated UCLA women's water polo team returns to the water in 2011 encouraged by its depth, team chemistry and experience. Eight seniors return this season, one year after the Bruins missed the NCAA title game on a team without any seniors.

The Bruins' senior class helped lead the program to back-to-back NCAA Championships as freshmen in 2008 and sophomores in 2009. **Priscilla Orozco**, **Kelly Easterday** and **Megan Burmeister** played instrumental roles on those two teams, and with a supporting cast of six juniors, nine sophomores and four freshmen, the veterans are looking to lead UCLA to its sixth NCAA title in the last seven seasons.

Head coach **Brandon Brooks** enters his second year at the helm of UCLA's women's water polo program. A two-time Olympian (2004, 2008) and a four-year men's water polo letterwinner for the Bruins (1999-2002), Brooks is most encouraged by the talent throughout UCLA's roster in 2011.

"I think the most exciting aspect about this team is that we have depth everywhere," Brooks said. "Not only do we have three really solid goalies, but we've got multiple skilled players at all the key positions. We have a pair of really strong centers, four players who can defend very well, a group of five quality drivers and three talented left-handers."

Among the most encouraging signs for Brooks and assistant coach **Molly Cahill** is that every starter and significant contributor returns from last season. In fact, UCLA brings back over 96 percent of its total offensive output from one year ago. Additionally, Brooks recruited four talented freshmen who are expected to push for playing time in 2011.

UCLA's offense will focus on the return of the program's top two goal scorers — **Priscilla Orozco** and **Grace Reynolds**. Orozco secured first-team ACWPC All-America acclaim in 2010, totaling 40 goals and a team-high 27 steals as a junior. The native of Commerce, Calif., enters her fourth season in Westwood having recorded 107 career goals at a 43.9 percent clip.

"Priscilla has been a mainstay for us for the last three seasons," Brooks said. "She got stronger in the offseason, which will help her put more power into her shot. She looks to have a great senior year for us."

Reynolds led the Bruins with 43 goals last year, her first season with the Bruins. A two-year standout center at California in 2007 and 2008, Reynolds transferred to UCLA for the 2010 season and thrived from the start. The native of Santa Ana, Calif., scored four goals in her first match for the Bruins, finishing the season with 14 multiple-goal efforts. She earned second-team ACWPC All-America and second-team All-MPSF honors.

"Grace brings a ton of experience to our program and is as talented as anyone in the country," Brooks said. "We are looking for her to be a huge presence for us, and we're excited to see how she elevates her game as a senior."



SARAH OROZCO

Another key scorer from the past two seasons, junior **Sarah Orozco**, looks to help UCLA as both an attacker and center. She has played in all 61 matches the last two seasons, having scored 21 goals on 51 attempts as a sophomore last season. The sister of teammate **Priscilla Orozco**, Sarah ranked third on the team with 25 earned exclusions in 2010.

"Sarah has been a tremendous part of our success the last two years," Brooks said. "She is such a versatile player because she can play center, she is a good driver and she has improved on the defensive end."

Other key scoring threats for UCLA include senior **Kelsey McGinley** and sophomore **Leah Trella**. McGinley has been a solid contributor the last three seasons, registering 22 goals on 50 attempts in 44 matches. The native of Laguna Hills, Calif., scored in the Bruins' 8-7 win over USC in the MPSF Tournament title match last spring before adding goals in the team's first two NCAA Tournament matches.

"We're looking for Kelsey to add quality minutes in each game for us this season," Brooks said. "She's been a very solid player for us as a reserve, but we know that she can carry a bigger role as a senior. She has the ability to make a very positive impact with her shooting and her quickness."

Trella, a sophomore from Huntington Beach, Calif., made consistent contributions as a freshman in 2010. She finished her rookie campaign with 14 goals and 19 steals in 21 matches. With one year of experience playing at the college level, Trella looks to have an even stronger season as a sophomore.

"Leah is very talented, very strong and very hard working," Brooks said. "She was hampered by an injury last year and had a hard time getting back in the pool. But I think we're going to be able to get more consistency from her this year. We're very excited to see what she will be able to do for us."

UCLA's defense will be anchored by Easterday and Burmeister, two stalwart defenders who have played major minutes over the past three seasons. Helping Easterday and Burmeister on the defensive end includes junior **KK Clark**, a 6-foot-2 product from Atherton, Calif., and sophomore **Emily Greenwood**, a 6-foot utility player hailing from Sanger, Calif.

Easterday has played in all 94 matches over the past three seasons, recording 41 goals, 37 steals, 16 assists and 10 blocks. The resident of Santa Barbara, Calif., was an honorable mention ACWPC All-America selection in 2010 and has captured ACWPC All-Academic Team accolades the past three seasons. Burmeister enters her senior season having totaled 37 goals and 43 steals in 88 matches. The native of Menlo Park, Calif., has twice secured ACWPC All-Academic Team honors.

"Kelly and Megan have been keys for us, defensively, the last three years," Brooks said. "Those two players have emerged as very strong, powerful defenders. They can hold their own against anybody. They're great communicators who can provide a lot of senior leadership on defense. They've been very consistent every day about putting in their work."

Clark made an immediate impact as a freshman in 2009, scoring 30 goals on 72 attempts. She followed her rookie year with 31 goals in 2010, the third-highest total on the team. In addition, Clark accrued 22 steals, 12 blocks and 19 earned exclusions last spring as a sophomore.

"KK Clark is going to impact every phase of the game for us," Brooks said. "She's tall, fast and has long arms. I think she will be much more consistent this year, in terms of putting shots away and have a higher percentage of shots on the cage. We look for her to be one of our leaders this season."

Greenwood was a consistent contributor as a freshman in 2010, totaling 17 goals and 10 steals in all 30 matches. A former standout on the USA Junior National Team, Greenwood had experience in the offseason training with the USA National Team.

"We used Emily a lot last season, and we look for her role to increase this year," Brooks said. "She communicates really well in the pool. Her experience with the national team is only going to help her improve. She's always a huge asset with her speed, and she has put in a lot of work on the offensive end."



CAITLIN DEMENT

At the center position, the Bruins will rely on Reynolds, **Becca Dorst** and **Katie Estrada**. Dorst, a 6-foot freshman from Menlo Park, Calif., thrived at Menlo-Atherton High School as a four-year varsity water polo and swimming letterwinner. Estrada has played in 40 games the past three seasons, adding 13 goals and three steals. Hailing from Coronado, Calif., Estrada is expected to push Reynolds and Dorst for playing time at center.

"While we expected Grace Reynolds to be a huge presence for us, Becca Dorst should challenge for playing time at that position," Brooks said. "She showed us in fall workouts that her water polo IQ is very high, especially for a freshman. She has a very good work ethic and a positive attitude toward putting in the work required at the collegiate level."

UCLA returns its primary two goalkeepers from last season — juniors **Caitlin Dement** and **Kristen Simonds** — and welcomes freshman **Sami Hill**. Dement established UCLA's single-season saves record with 264 stops in 2010. Hill enters the program having been a starting goalkeeper for the USA Junior National Team.

"Caitlin and Sami are two fantastic goalkeepers, and it's an open race at that position as we head into the season," Brooks said. "Caitlin was in her first year as the team's starting goalkeeper last season, and she broke the school's single-season saves record. On top of that, she returns one year stronger and one year wiser. Sami is very athletic and is determined to be the best that she can be. We've got a good situation in the cage this season."

The Bruins look toward 2011 with excitement, as the MPSF again promises to be the nation's toughest conference. UCLA, along with last season's NCAA Tournament finalists — Stanford and USC — are expected to contend for the national title. California, Hawai'i and San Diego State each defeated UCLA in 2010 and should pose threats as challengers again this spring.

"The MPSF is the strongest conference in the country, and nothing is going to change there," Brooks said. "The sport is getting a higher level of coaching. Anytime one of those jobs opens, whether from the MPSF or a neighboring program, you're going to get a more competitive applicant pool and that's only going to make our sport stronger."

As for what to expect in his second year as UCLA's head coach, Brooks cannot wait for the challenges that lie ahead.

"Year two has been much more stable," Brooks said. "There were a lot of ups and downs last year, which were to be expected as a first-year head coach on a team with a lot of youth. But when you're going through it, that's when you learn to adapt and react to certain situations. Our team is very excited for this year. We've been excited since the last day of last season to get back."

2011 ROSTER

No.	Name	Pos.	Yr.	Ht.	Hometown (Previous School)
1	Caitlin Dement	GK	Jr.	6-0	Chino, Calif. (Ayala)
1	Sami Hill	GK	Fr.	5-11	Santa Barbara, Calif. (Dos Pueblos)
1	Kristen Simonds	GK	Jr.	6-2	San Jose, Calif. (Archbishop Mitty)
2	Emily Greenwood	Utl.	So.	6-0	Sanger, Calif. (Buchanan)
3	Megan Burmeister	Def.	Sr.	5-8	Menlo Park, Calif. (Menlo)
4	Kelsey McGinley	Att.	Sr.	5-7	Laguna Hills, Calif. (Laguna Hills)
5	Sarah Orozco	Att.	Jr.	5-6	Commerce, Calif. (Montebello)
6	Priscilla Orozco	Att.	Sr.	5-7	Commerce, Calif. (Montebello)
7	KK Clark	Utl.	Jr.	6-2	Atherton, Calif. (Sacred Heart Prep)
8	Brooke Martin	Att.	So.	5-10	Temecula, Calif. (Chaparral)
9	Katie Estrada	Ctr.	Sr.	5-8	Coronado, Calif. (Coronado)
10	Grace Reynolds	Ctr.	Sr.	5-11	Santa Ana, Calif. (California)
11	Kelly Easterday	Utl.	Sr.	5-11	Santa Barbara, Calif. (Santa Barbara)
12	Hannah Sebenaler	Att.	Jr.	5-7	Coronado, Calif. (Coronado)
13	Nicole Barker	Att.	So.*	5-10	Huntington Beach, Calif. (Huntington Beach)
14	Noel Umphrey	Att.	Sr.	5-5	Santa Ana, Calif. (Foothill)
15	Randi Bresee	Ctr.	Jr.	5-11	Rancho Cucamonga, Calif. (Los Osos)
16	Leslee Kaczmarek	Ctr.	So.	5-11	Corona del Mar, Calif. (Corona del Mar)
17	Gisselle Naranjo	Att.	So.	5-5	Commerce, Calif. (Whittier)
18	Leah Trella	Att.	So.	5-10	Huntington Beach, Calif. (Huntington Beach)
19	Kelly Ronimus	Att.	Fr.	5-10	Coronado, Calif. (Coronado)
20	Kelsey Hafferkamp	Att.	Sr.	5-11	Piedmont, Calif. (Piedmont)
21	Kari Krumpholz	Utl.	So.	5-10	Santa Ana, Calif. (Foothill)
22	Natasha Schulman	Def.	So.	5-9	Laguna Beach, Calif. (Laguna Beach)
23	Victoria Kent	Att.	Fr.	5-8	Newport Beach, Calif. (Corona del Mar)
24	Larissa Todisco	Att.	So.	5-6	Lake Forest, Calif. (El Toro)
25	Becca Dorst	Utl.	Fr.	6-0	Menlo Park, Calif. (Menlo-Atherton)

*indicates player has utilized redshirt year

COACHING STAFF

Head Coach Brandon Brooks (2nd season)
Assistant Coach Molly Cahill (3rd season)

ALPHABETICAL ROSTER

No.	Name	Pos.	Yr.	Ht.
13	Nicole Barker	Att.	*So.	5-10
15	Randi Bresee	Ctr.	Jr.	5-11
3	Megan Burmeister	Def.	Sr.	5-8
7	KK Clark	Utl.	Jr.	6-2
1	Caitlin Dement	GK	Jr.	6-0
25	Becca Dorst	Utl.	Fr.	6-0
11	Kelly Easterday	Utl.	Sr.	5-11
9	Katie Estrada	Ctr.	Sr.	5-8
2	Emily Greenwood	Utl.	So.	6-0
20	Kelsey Hafferkamp	Att.	Sr.	5-11
1	Sami Hill	GK	Fr.	5-11
16	Leslee Kaczmarek	Ctr.	So.	5-11
23	Victoria Kent	Att.	Fr.	5-8
21	Kari Krumpholz	Utl.	So.	5-10
8	Brooke Martin	Att.	So.	5-10
4	Kelsey McGinley	Att.	Sr.	5-7
17	Gisselle Naranjo	Att.	So.	5-5
6	Priscilla Orozco	Att.	Sr.	5-7
5	Sarah Orozco	Att.	Jr.	5-6
10	Grace Reynolds	Ctr.	Sr.	5-11
19	Kelly Ronimus	Att.	Fr.	5-10
22	Natasha Schulman	Def.	So.	5-9
12	Hannah Sebenaler	Att.	Jr.	5-7
1	Kristen Simonds	GK	Jr.	6-2
24	Larissa Todisco	Att.	So.	5-6
18	Leah Trella	Att.	So.	5-10
14	Noel Umphrey	Att.	Sr.	5-5



Back row (left to right): Staff athletic trainer Laef Morris, Randi Bresee, Caitlin Dement, Kelly Easterday, Becca Dorst, Kristen Simonds, KK Clark, Grace Reynolds, Kelsey Hafferkamp. Middle row: Student athletic trainer Andrea Aguirre, Sami Hill, Nicole Barker, Kari Krumpholz, Leah Trella, Kelsey McGinley, Katie Estrada, Megan Burmeister, Brooke Martin, Leslee Kaczmarek, Emily Greenwood, head coach Brandon Brooks. Front row: Natasha Schulman, Kelly Ronimus, Victoria Kent, Gisselle Naranjo, Noel Umphrey, Priscilla Orozco, Hannah Sebenaler, Sarah Orozco, Larissa Todisco, assistant coach Molly Cahill.

PRONUNCIATION GUIDE

Bresee – BREE-zee
Burmeister – BER-my-ster
Dement – deh-MENT
Kaczmarek – KAZ-mare-ik

Naranjo – Nah-RAHN-ho
Orozco – Oh-ROZ-coh
Ronimus – RAH-neh-miss
Schulman – SHOOOL-mun

Sebenaler – SEE-ben-ah-ler
Simonds – SY-mondz
Umphrey – UM-free

GUIDE TO WATER POLO POSITIONS

GK – goalkeeper, ATT – attacker/driver, CTR – center, DEF – defender, UTL – utility

Attacker: Similar to the guard and forward positions in basketball. These players shoot often and create offensive chances for their teammates, as well as disrupt the opponents' offense. Also known as "driver."

Center Offense/Defense: Similar to the post position in basketball. These players station themselves in front of goal, engaging in physical battles for position. Defenders are similar to football safeties by preventing opponent breakaways on counterattack.